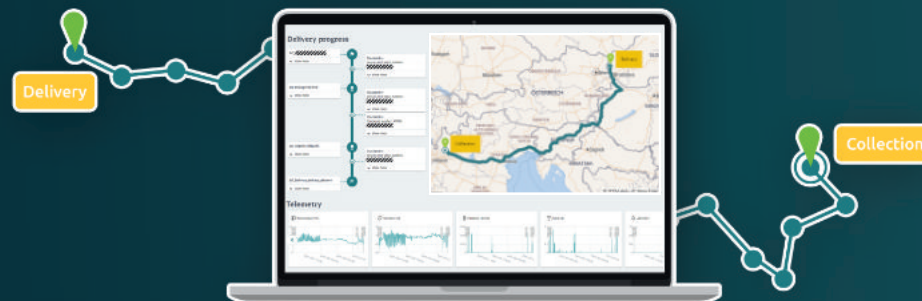


connect2track

Ensure shipment monitoring and condition control with confidence: With **connect2track**, you have full transparency over all movements in your Supply Chain.



Your Benefits

- **Seamless Visibility:** 24/7 availability of tracking data along the supply chain. Combination of different data sources such as onboard units, IoT devices or vehicle position in a seamless overview.
- **Live-Tracking of Deliveries:** Keep an eye on the exact locations of your consignments in real time and receive an estimated time of arrival at the destination. Benefit from automatic, location-based notifications.
- **Transparent State of Deliveries:** Use condition monitoring for sensitive and valuable goods. The current transport conditions such as temperature, humidity and mechanical stress can be called up at any time.
- **Enhanced Security:** Meet the highest standards with live tracking and monitoring of container doors using light sensors, including automated alarm notifications. Transport damage-prone, valuable and particularly theft-prone goods safely to their destination.
- **Optimal technical Equipment:** Receive tracking devices from us that exactly match your requirements. We take care of the provision and integration of the appropriate devices.

connect2track



Functions and Features

Location Tracking

See at any time where your delivery is located.

Allround-Tracking Device

The V-Type Tracking Device is a flexible, multifunctional tracking device. It manages a variety of sensor data such as location, temperature, humidity, light, shocks and door openings – ideally suited for a wide range of transport applications including pharmaceuticals (3-point calibration). It is easy to install and recyclable.

Condition Monitoring

Keep an eye on the condition of the goods. Settings and sensors can be customised. Monitoring is carried out using telemetric data such as temperature, humidity and vibrations.

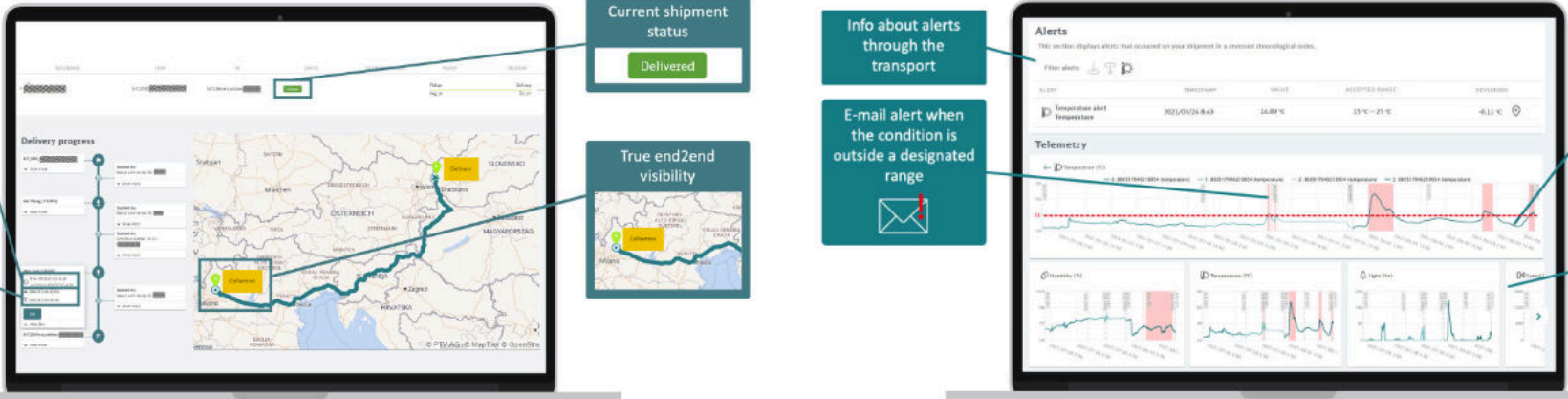
Alerts via E-mail

Receive notifications as soon as the status of the delivery changes or a location specified by you has been reached (geofencing).

ETA Calculations

The estimated time of arrival of the delivery is continuously recalculated. Monitoring the Container Doors you will receive a notification as soon as a container door is opened.

connect2track



Continuous ETA calculation
ETA: 2021/07/16 6:50
(updates on 2021-07-20 12:54)

Geofence entry & exit
2021/07/16 23:01
2021/07/20 21:18

Current shipment status
Delivered

True end2end visibility

Info about alerts through the transport

E-mail alert when the condition is outside a designated range

Temperature deviations are marked on the graph

Telemetry data at one glance



Get in touch with us!
We look forward to a personal conversation or your email!

phone +49 231 878008-0
mail wecare@bitergo.de
web www.bitergo.de